

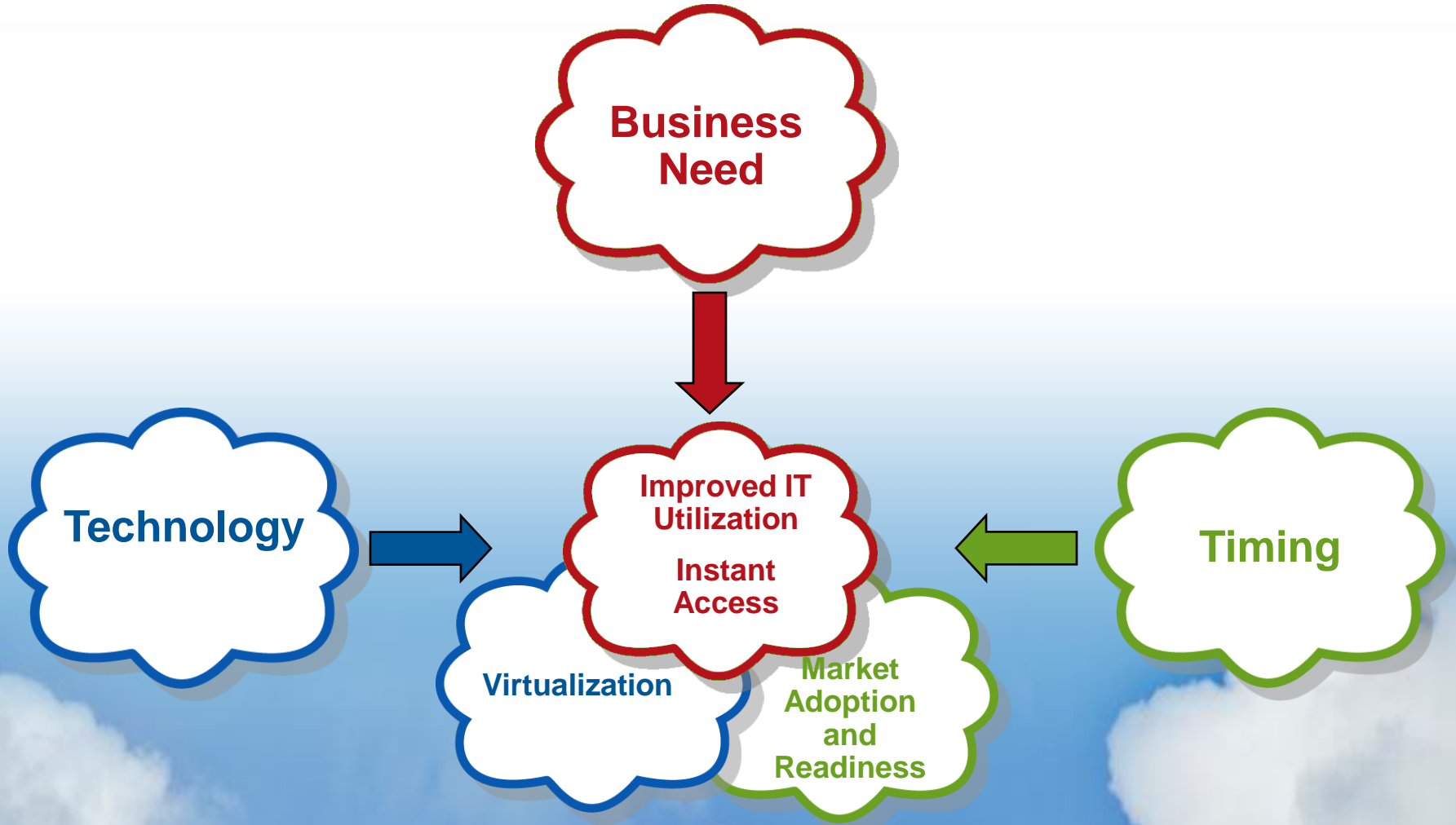
Cloud Infrastructure for Efficiency, Control and Choice

Mike Feinberg
Senior Vice President and General Manager
Cloud Infrastructure Group

Xconomy CLOUD COMPUTING GOES EXPONENTIAL **CLOUD³** Forum

December 10, 2009

A Transformative Convergence



EMC: Delivering Cloud Solutions



- One size does not fit all –
Cloud technology addresses many business needs
- Cloud is vast –
touches companies of all sizes and across multiple industries
- Through its unique approach to cloud, EMC provides
complementary solutions

VCE
Vblock
Acadia

**Private Cloud,
Global Services
Structure**
(Commercial, Enterprise)

Atmos
Atmos Online

Cloud Object Store, Cloud Infrastructure Services
(Start up – Enterprise)

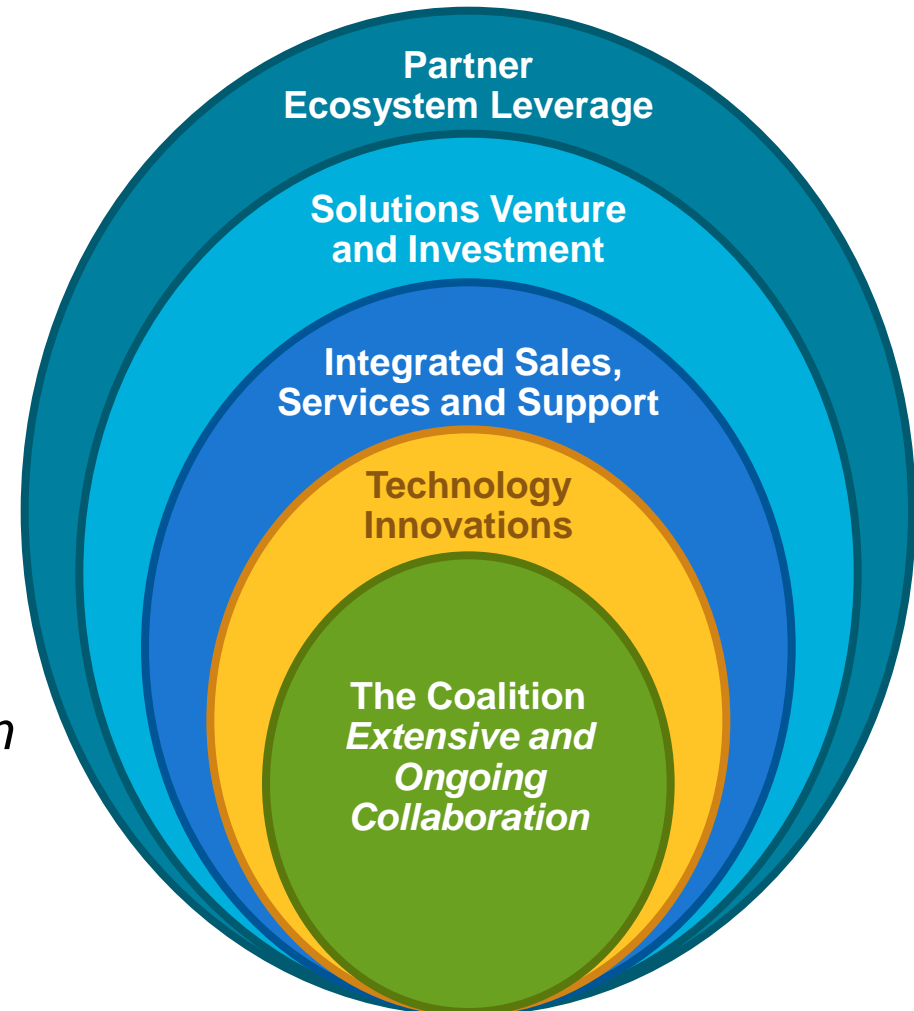
Decho

Consumer Cloud, Cloud Information Services
(Consumer/SMB focus)

Virtal Computing Environment (VCE) Coalition

The Basics

- Private Cloud is the name for an end state in IT architecture
- Getting our customers from where they are to that end state is a *journey*
- The VCE coalition will **lead that journey**
- The first leg of that journey is enabled by *pervasive virtualization*
- Our first wave of announcements focused on enabling the first leg



Acadia: Cisco and EMC Solutions Joint Venture



With Minority Investments from VMware and Intel

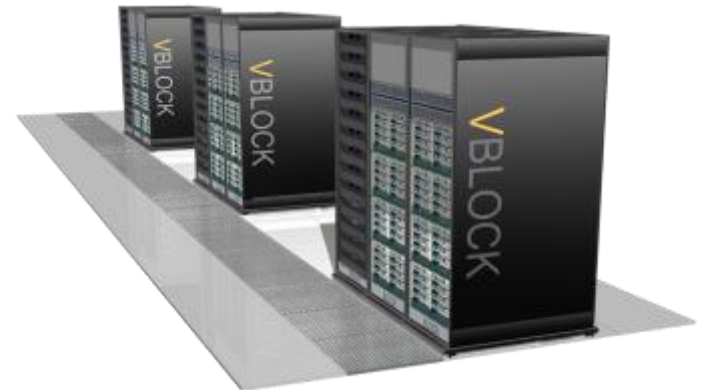
Build

Operate

Transfer

Joint Venture Description

- Accelerate adoption of private cloud
- Unique Build, Operate, and Transfer model
- Standardized on Vblock architectures
- Enable partner ecosystem and service end customers
- Available Q1 2010



Scaling with Web 2.0 Applications

EMC Cloud Infrastructure Group: Atmos and Atmos Online Services



Announced
Q408

Atmos

Unstructured Content Cloud



Boston



New York



London

Federation

Preview
Available

Atmos Online

Cloud Services



Storage
On-Demand



Compute
On-Demand

Atmos Capabilities

- Multi-petabyte scale object store
- Geographic distribution
- Web services (REST/SOAP) and file access
- Policy-based management

Atmos Online Storage Service

- On-demand, pay-as-you go storage services with federation to move content between Atmos systems and Atmos Online

Atmos Online Compute Service

- On-demand pay-as-you-go compute services with instant and unlimited access to virtual servers

The Secret Sauce: EMC Atmos Software-- Increasing Operational Efficiency



- **Massively scalable infrastructure**

- Multiple petabytes; billions of objects
- Hundreds of sites, fully distributed
- Unified namespace

- **Policy-based management**

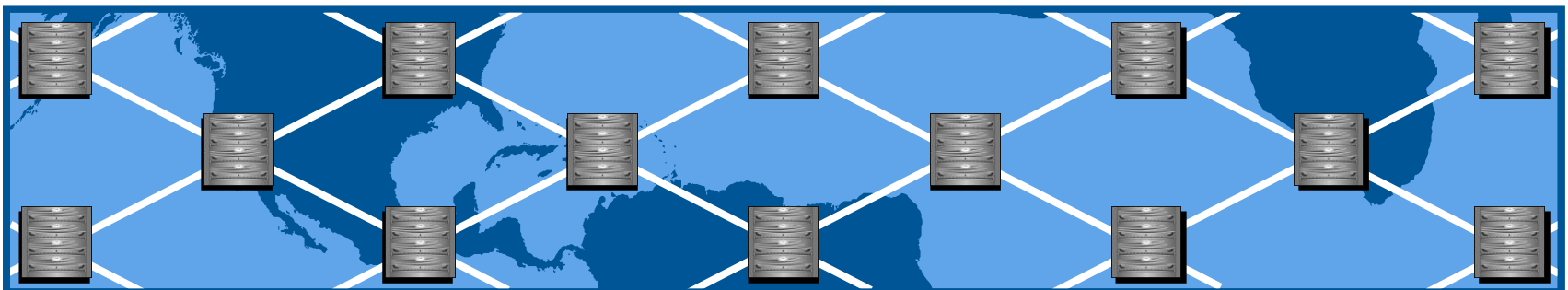
- Policy tells content where to go, what actions to take
- Integrated object based metadata
- Event-driven policy evaluation

- **Data services and access methods**

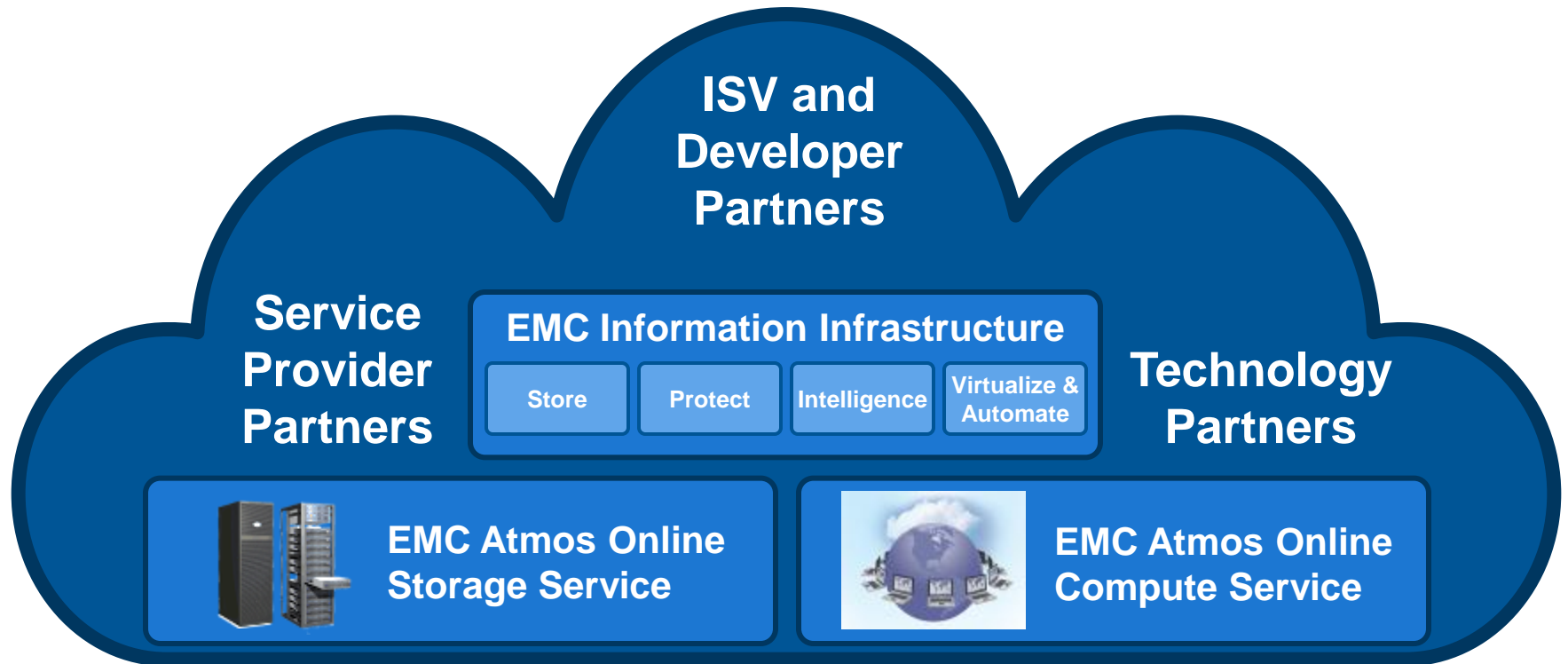
- Replication, compression, de-duplication, spin-down
- Web services (REST/SOAP) and file system access

- **Management at scale**

- Auto-config and auto-healing architecture
- Multi-tenancy
- Manage more with fewer people



EMC Cloud Infrastructure Group: Delivering a Cloud Infrastructure



Cloud Service

Self-service

Granular metering

Pay as you go

Rapid provisioning

Cloud Architecture

Exabyte scale

Multi-tenant

RESTful / Elastic

Federated

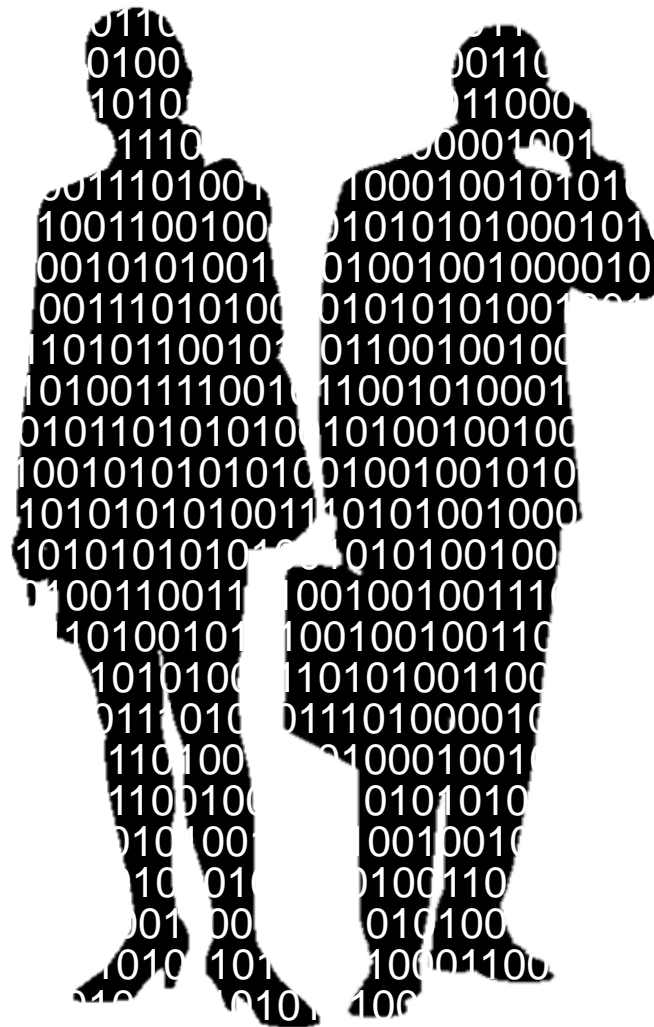
Anatomy of the New Digital Consumer

**Exploding
Quantity**

**Scattered
Location**

**Lengthening
Duration**

**Growing
Value**



Decho: Focused on the Consumer Cloud



Cloud-based Personal Information Service



Keep Track of Your Digital Life – manage all information across multiple devices and Web services from a single place

Access Anywhere – 24x7 secure access to information from any web browser, PC or mobile device

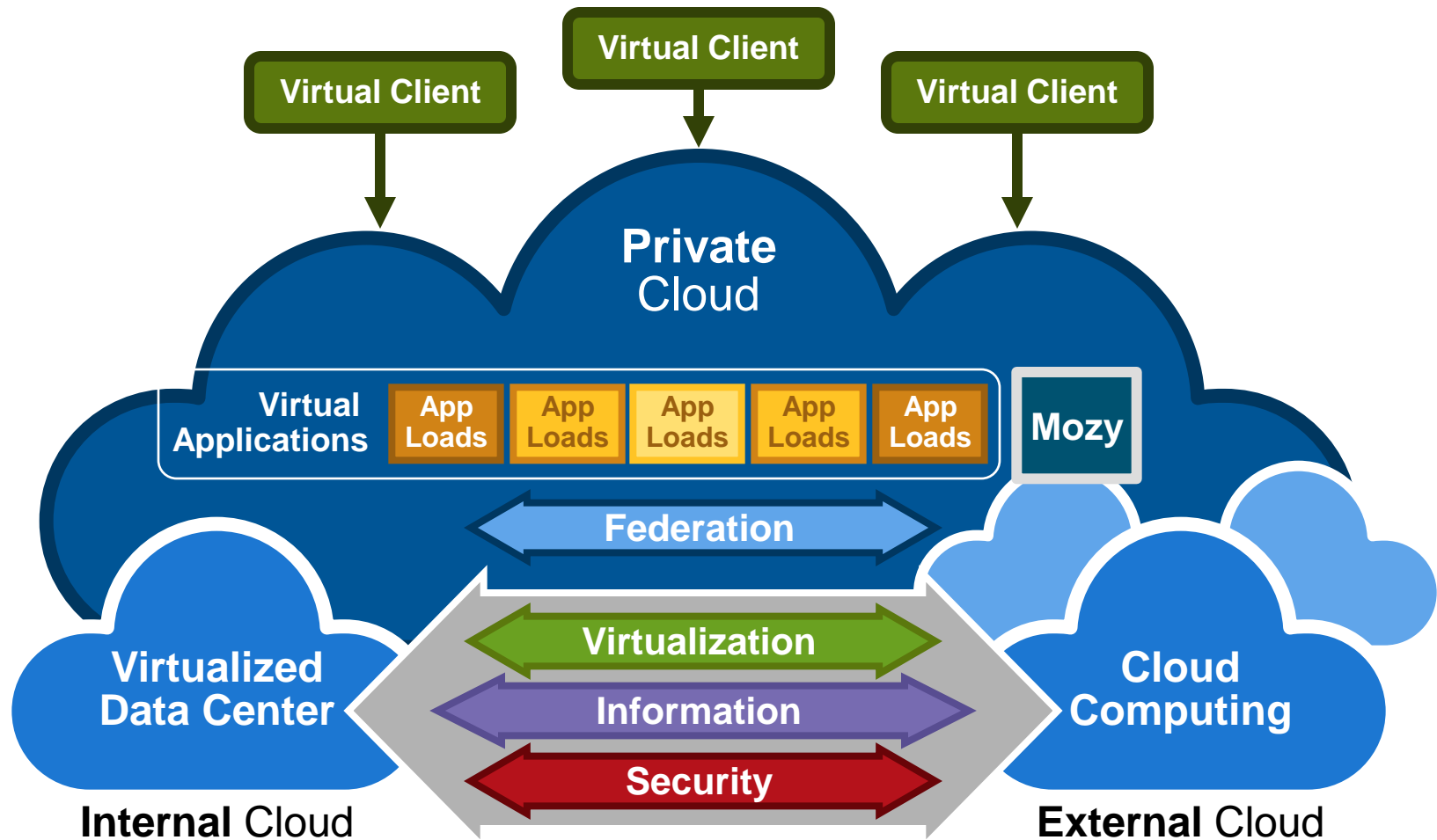
Online and Offline – synchronization ensures information access even without Internet access

Search and Organize – find, tag and create information

Share and Publish – securely share information with friends and family around the world

Protect and Preserve – automatic, no-hassle backup of all your info

EMC's Cloud Vision: Enabling Efficiency, Choice, and Control



Cloud Object Store -- Atmos

EMC²[®]

where information lives[®]